



**Southwest
Oncology
Group**

A National
Clinical
Research
Group

STATISTICAL CENTER

July 2002

Introduction

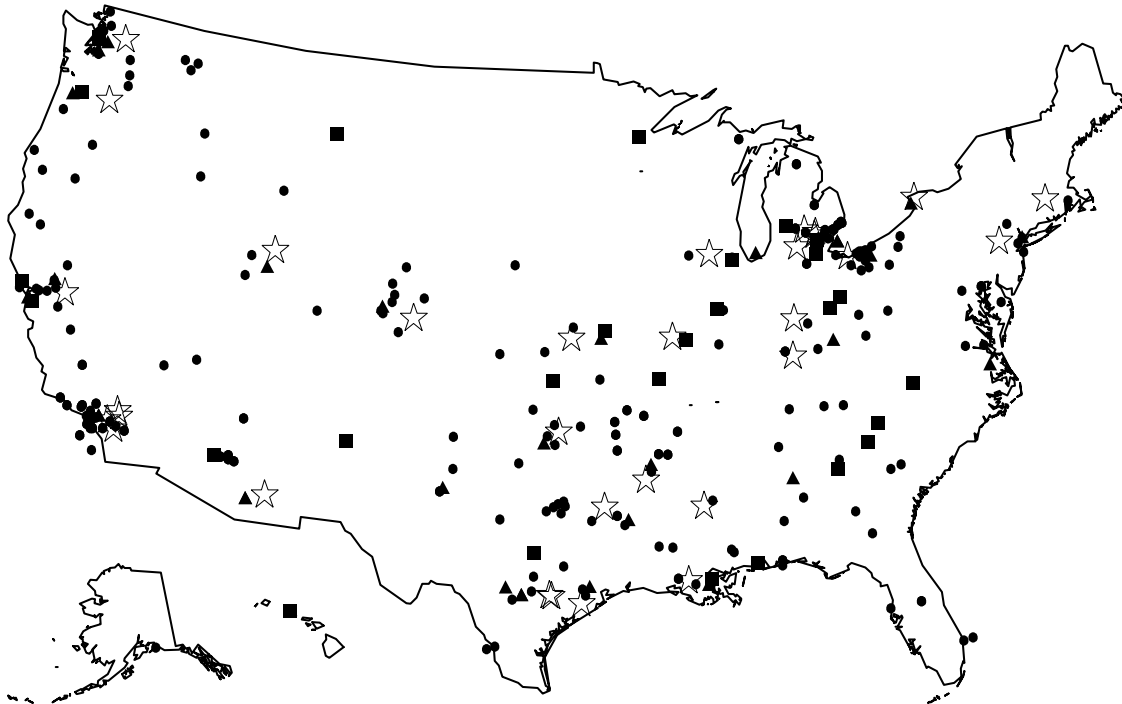
The Southwest Oncology Group is a national consortium of institutions and investigators organized for the purpose of improving the survival of cancer patients through clinical research. The Group began in 1956 as the Southwest Cancer Chemotherapy Study Group; it has expanded to include all modalities of cancer therapy, and institutions in all regions of the country. Most of the studies done by the Group are designed to assess whether a regimen merits further study (Phase II), or to compare two or more regimens (Phase III). Studies in cancer control research (prevention, symptom control or quality of life) are also carried out. The group is also coordinating two large studies aimed at preventing prostate cancer.

The Statistical Center of the Southwest Oncology Group is located at the Fred Hutchinson Cancer Research Center and at Cancer Research And Biostatistics in Seattle, Washington, having been moved from M. D. Anderson in Houston in 1984. The Director is John Crowley, Ph.D. The Operations Office of the Group is located at the Cancer Therapy and Research Center in San Antonio, Texas and is under the direction of the Group Chair, Charles A. Coltman, Jr., M.D.

Figure 1 is a map giving the location of the cooperating institutions. Member institutions are the academic centers, which formed the original nucleus of the Group. Affiliate institutions are groups of community physicians affiliated with a member institution. Community Clinical Oncology Program (CCOP) institutions are community hospitals or consortia with a mandate for both clinical and cancer control research. Urologic Cancer Outreach Program (UCOP) institutions are organizations specializing in the treatment of genitourinary cancers. Prostate Cancer Prevention Trial (PCPT) sites are involved in a large randomized chemoprevention trial testing the agent finasteride (see Figure 2). The Selenium and Vitamin E Cancer Prevention Trial (SELECT) sites are presented in Figure 3. Locations of patients registered to Group studies in 2001 are depicted in Figure 4, using zip codes of their residences. The organization of the Statistical Center is shown in Figure 5.

Figure 1

Southwest Oncology Group Institutions



☆ Member

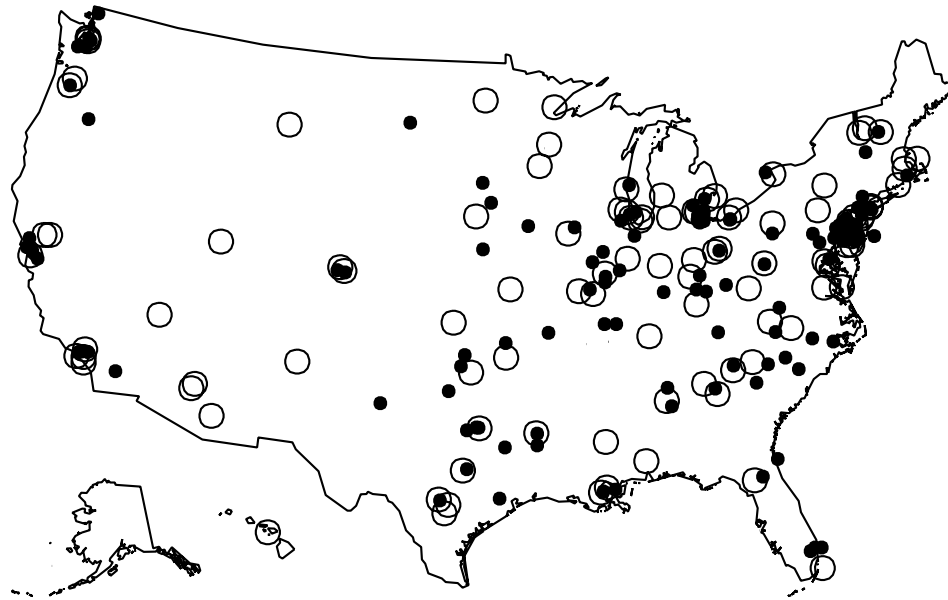
■ CCOP

● Affiliate

▲ UCOP

Figure 2

Prostate Cancer Prevention Trial Study Centers



○ Center ■ Site

Figure 3

SELECT Study Trial Centers

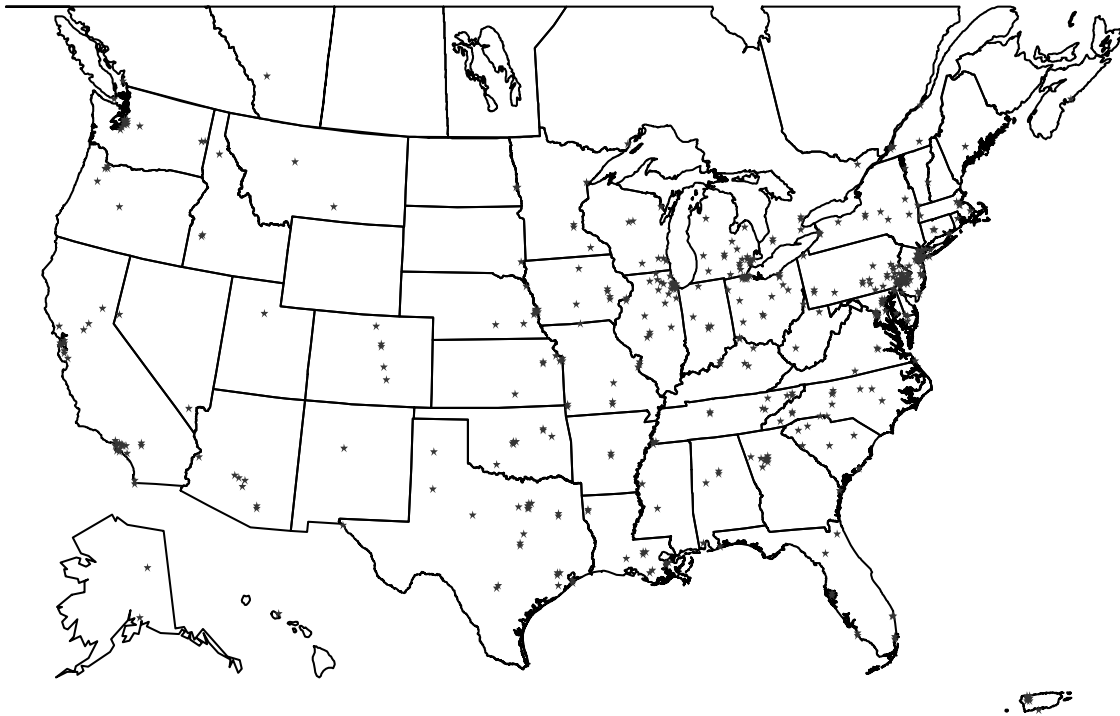
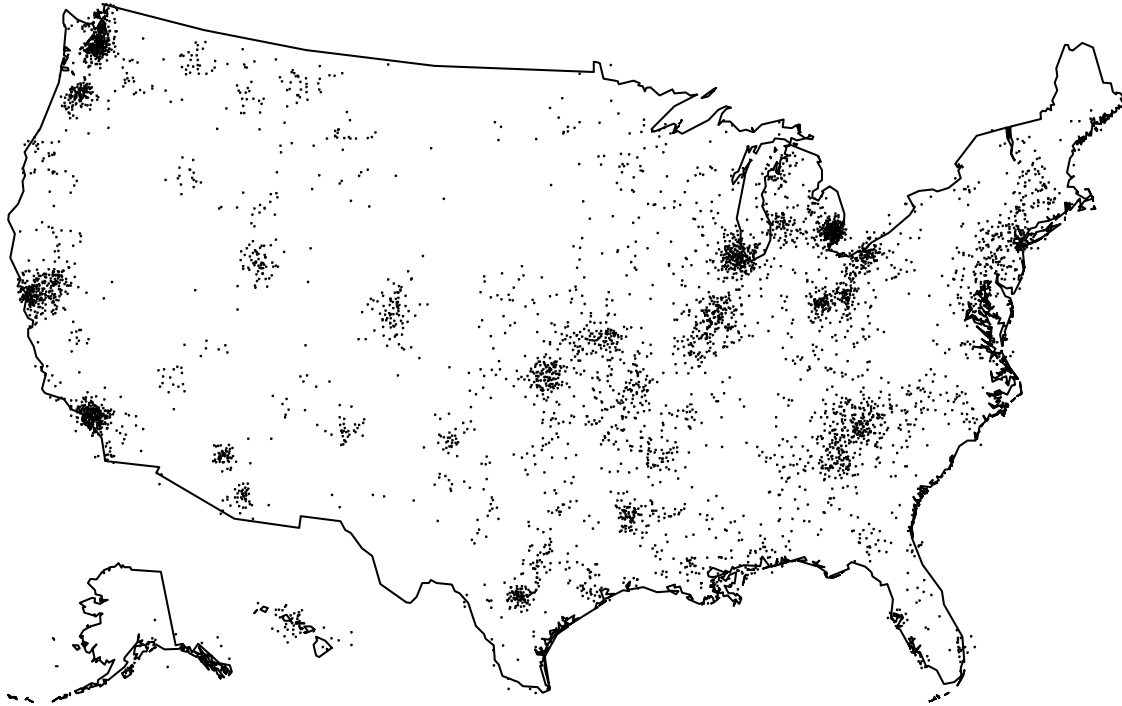


Figure 4

Southwest Oncology Group 2001 Registrations

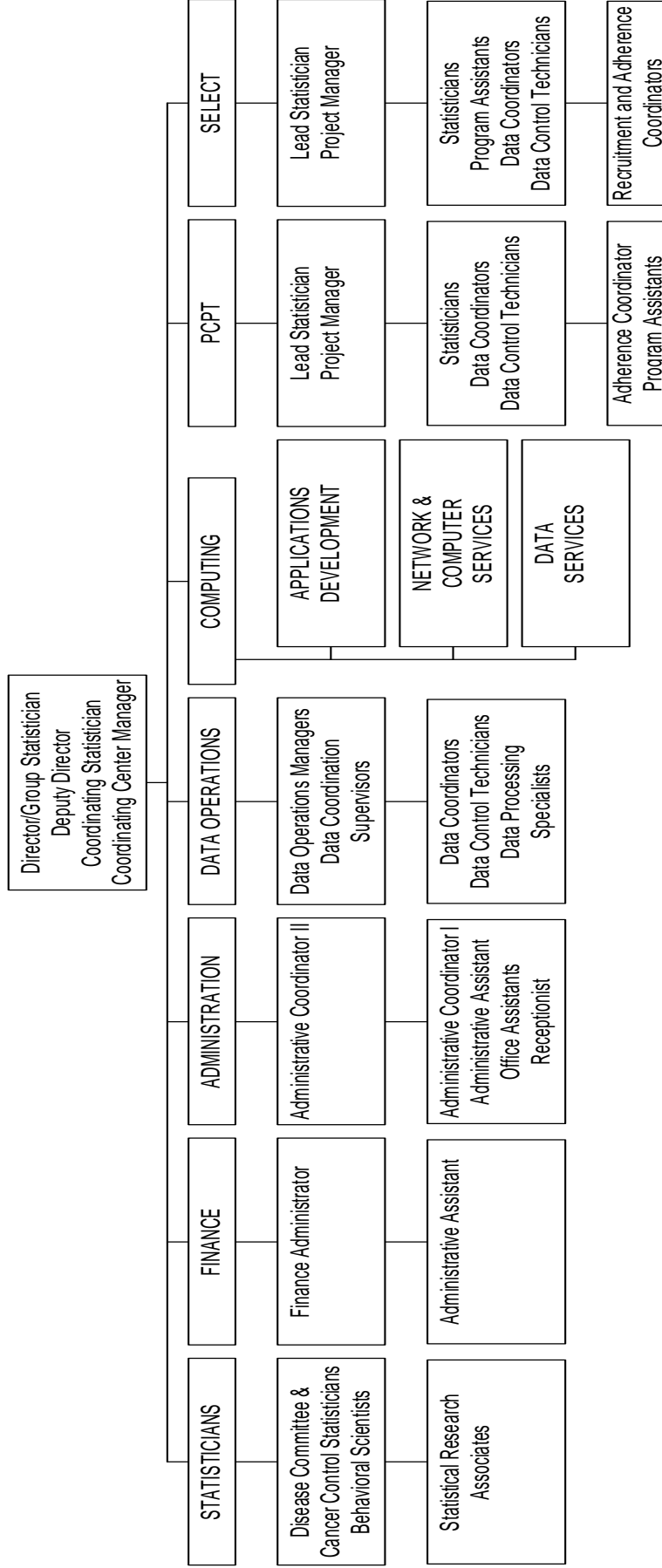




Southwest Oncology Group Statistical Center

Figure 5

SWOG STATISTICAL CENTER ORGANIZATIONAL CHART



The Group consists of 32 member institutions, 28 CCOPs, 234 affiliates, and 27 UCOPs. In 2001, 5,455 patients were registered to clinical trials, cancer control studies and ancillary studies. There are currently 91 studies open for accrual in 13 committees.

Patient registrations over the past five years by study type, committee, and institution type are as follows:

**Table 1: SWOG Patient Registrations Over 5 Years
(Numbers Exclude Prostate Cancer Prevention Trial and SELECT)**

	Jan 97- Dec 97	Jan 98- Dec 98	Jan 99- Dec 99	Jan 00- Dec 00	Jan 01- Dec 01	<u>Total</u>
Total	5,030	4,392	4,468	4,039	5,455	23,384
Study Type						
Treatment:						
Phase I	20	11	0	5	25	61
Phase II	915	1,106	911	575	520	4,027
Phase III	3,184	2,334	3,018	3,047	4,368	15,951
Other	911	941	539	412	542	3,345
Committee						
Brain	117	96	69	21	35	338
Breast	1,205	923	1,581	1,178	1,621	6,508
Ca Control	11	0	0	0	0	11
GI	1,181	1,322	902	585	607	4,597
GU	494	319	457	1,011	1,021	3,302
GYN	185	118	118	158	185	764
Head/Neck	152	156	148	135	44	635
Leukemia	534	435	144	164	163	1,440
Lung	462	307	482	267	605	2,123
Lymphoma	239	292	198	295	280	1,304
Melanoma	162	178	169	90	111	710
Myeloma	249	201	154	94	30	728
Sarcoma	39	45	46	41	753	924
Institution						
Member	1,418	1,289	1,200	913	1,297	6,117
Affiliates	802	788	948	894	1,103	4,535
CCOP	1,137	1,138	1,412	1,148	1,647	6,482
UCOP	303	202	239	384	428	1,556

Registrations From Other Groups:	Jan 97- Dec 97	Jan 98- Dec 98	Jan 99- Dec 99	Jan 00- Dec 00	Jan 01- Dec 01	Total
CALGB	409	341	171	189	300	1,410
CTSU	0	0	0	0	15	15
ECOG	562	419	273	154	292	1,700
EORTC	0	0	17	107	79	203
EPP	0	0	5	20	33	58
GOG	0	3	1	62	90	156
NCCTG	162	86	65	63	69	445
NCIC	114	49	58	43	75	339
RTOG	121	77	79	62	27	366